

1. Connect AC adapter (During FW update, if power goes down, ODD may become never booting up.).
2. Execute the file "FW Update Tool.exe".
3. Main menu of Update tool

If the ODD (Optical Disk Drive) is affected, you can see the following display. Please push "Update F/W" button. (Figure 1-1 )

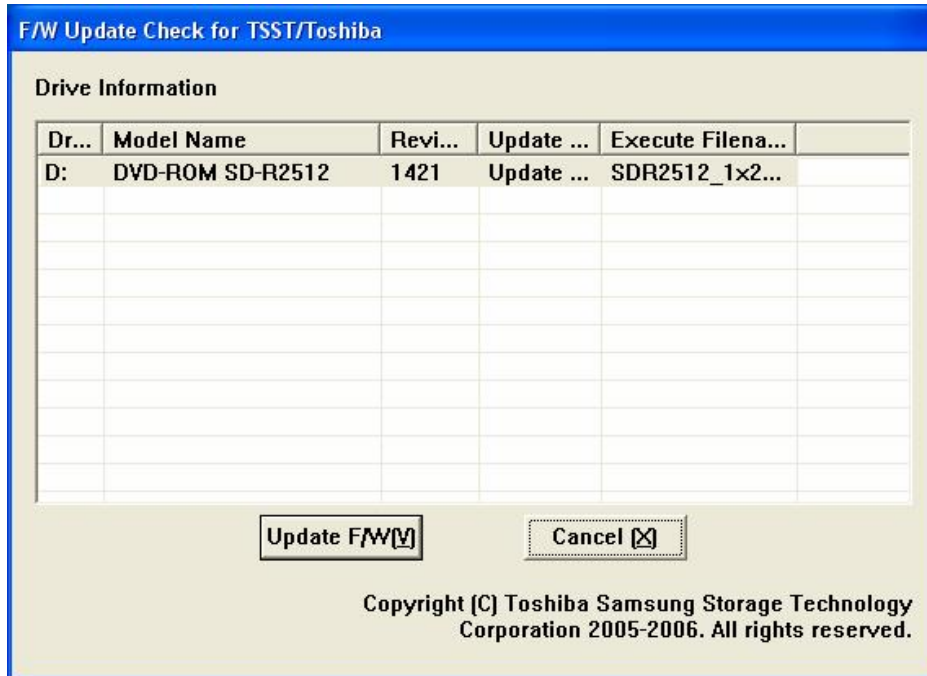


Figure 1-1 Affected Drive

If the ODD is not affected., you can see the following display. (Figure 1-2 )

Please push "Cancel". Your ODD doesn't need to update the FW for this case.

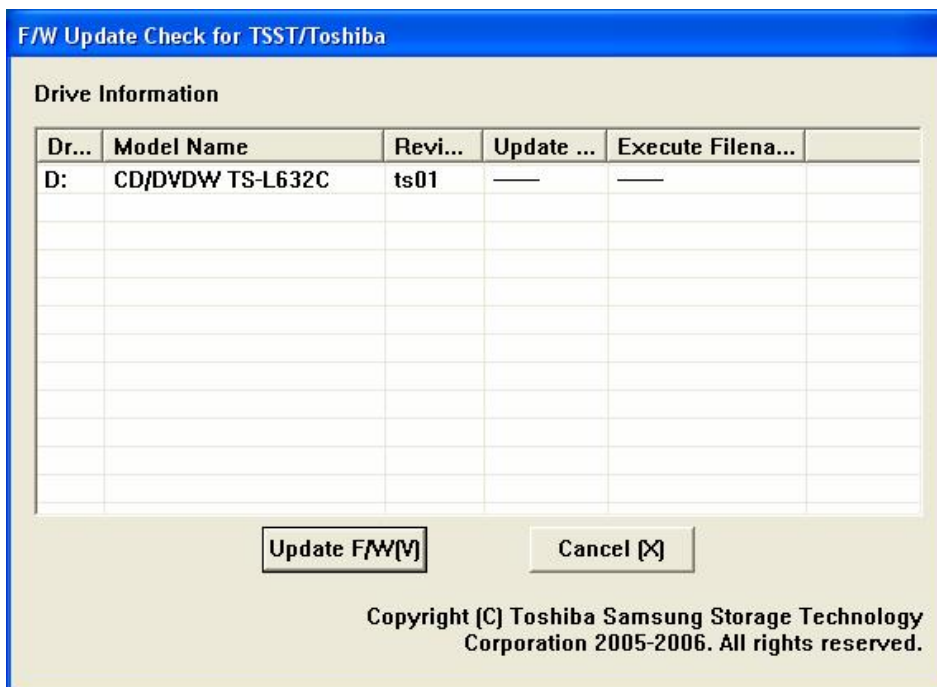


Figure 1-2 Not affected Drive

If your PC has plural ODDs, you can see the following display. ( Figure 1-3 ) Please select the affected ODD (Not “-----”).

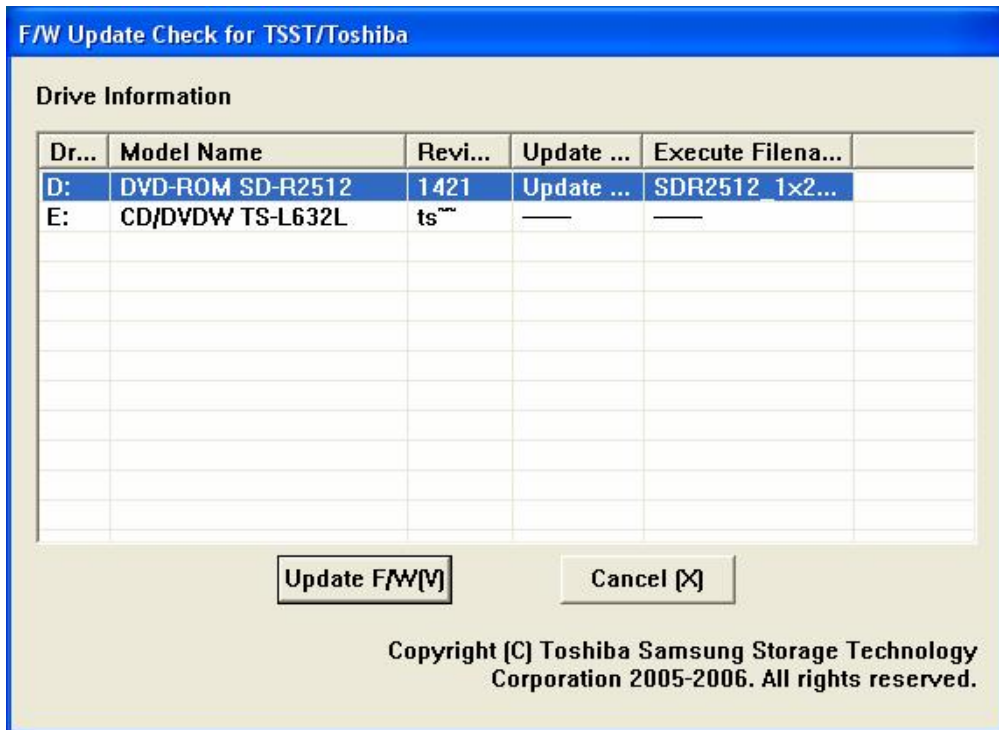


Figure 1-3 Plural ODDs case

### 5. Error message

#### No ODDs

If your PC doesn't have ODDs, you can see the following message. (Figure 2-1)



Figure 2-1 No ODDs

#### No AC adaptor

If NO AC adaptor during FW update, you can see the following message. (Figure 2-2)

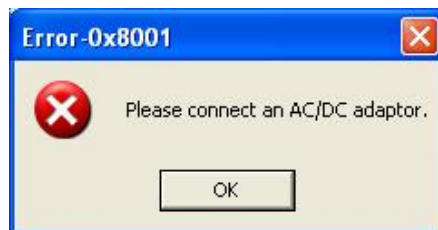


Figure 2-2 No AC adapter