



## **TOSHIBA CONFIGFREE™ IN ACTION WIRELESS RADAR SCREEN: DRAG & DROP CONNECTION**

ConfigFree™ is a unique software utility that makes it easy to manage wired and wireless connections.

Incorporating wireless productivity features, ConfigFree enables you to use wireless networking for enhanced data exchange and meeting functionality.

**PROFILE SETTINGS** – Easily capture location-based connectivity profiles for future use. Automatically switch profiles for enhanced mobile working.

**CONFIGFREE™ SUMMIT** – Establish net meetings in an instant. Documents can be shared with drag and drop functionality.

**WIRELESS RADAR** – This intuitive radar screen graphical user interface displays nearby wireless devices and enables drag & drop connectivity.

**CONNECTIVITY DOCTOR** – Analyses your network connection and assists in diagnosing and fixing the problem.

### **MOBILITY ISSUE NEED TO GET CONNECTED QUICKLY?**

There is nothing more frustrating than locating a wireless hotspot but being unable to make a connection. When you are traveling for business or pleasure, you do not have time to waste trying to establish a wired or wireless connection. Whether you are in an airport lounge, at a conference center, in your hotel room or on a train, quick and easy connectivity is what you need.

### **MOBILITY SOLUTION CONNECT USING THE RADAR SCREEN**

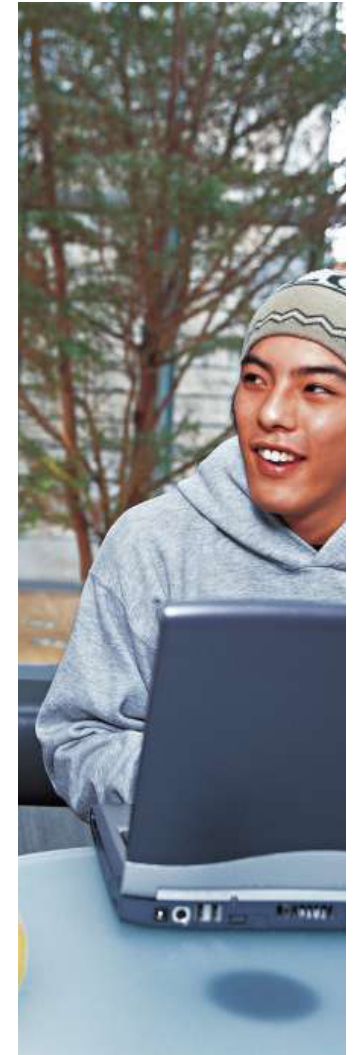
The ConfigFree Wireless Radar Screen is a utility that enables you to search for nearby wireless connection possibilities, including Wi-Fi access points, ad/hoc networks and Bluetooth devices.

Nearby wireless devices are visible in a clear, circular Radar Screen user interface. For Wi-Fi networks, stronger signals appear closer to your own computer, which is situated at the centre of the radar screen.

You can position your pointer over a signal's icon to find out more information about it, such as its SSID or name, MAC address, or current signal strength.

### **KEY BENEFITS RADAR SCREEN**

- Find nearby wireless devices and networks quickly using the Radar Screen interface
- Quickly identify the strongest point of connection in your area
- Get the SSID information you need to connect
- Use the Drag & Drop function to get connected



## WIRELESS CONNECTIONS ARE EASY

Connecting to a hotspot can be difficult at times for a number of reasons.

First, it is often tempting to think that the closest access point offers the best connection. However, this is not always the case. The strongest connection possible may be to a device that is further away.

Second, the user may find it difficult to find the information needed to connect to a wireless network, such as the SSID.

Third, navigating the Windows settings in order to change network connections may be difficult for users who rarely or infrequently reconfigure their wireless settings.

The Radar Screen helps to identify the strongest point of connection, provides the information needed to get connected and prompts the user to change the settings.

Overall, wireless connectivity is simpler and faster with ConfigFree's Radar Screen for Drag & Drop connectivity.



### 1 ON THE RADAR SCREEN

With the Radar Screen, you can see all of the nearby wireless devices in the area. The devices with the strongest signal are easily identifiable, enabling you to choose the best possible wireless connection.

Once a wireless connection has been found, Radar Screen indicates the type of wireless network technology in use (802.11b or g). A small lock icon shows that the network is protected via a WEP key.



### 2 DRAG AND DROP CONNECTIVITY FOR WIRELESS AND BLUETOOTH

Click on the access point or wireless device, then drag to draw a line to your computer.

For wireless networks, if this is the first time you are making a connection to this SSID, the ConfigFree software presents you with a settings screen so you can enter the SSID/WEP information. When connecting to this SSID in the future, ConfigFree will open the Windows Connection dialog for you.